



EPoxy Flooring

BLENDEx
BY MILBURN FLOORING SINCE 1959

WHY BLENDEX?

Blendex by Milburn Flooring specializes in high-performance coating systems. Epoxy flooring is one of the most durable flooring products with a long-life span. Epoxy offers superior protection and excellent abrasion and chemical resistance. With a large color pallet, these floors allow for custom designs to be incorporated into the application providing a high-end finish. Blendex by Milburn Flooring's workmanship and dedication to customers has proven to be the key to our success as the leading installers in the field of concrete surface preparation, concrete repair, and the installation of urethane, MMA & epoxy flooring, and wall systems. We believe quality does not cost; it pays, so we hold ourselves to the highest standards.

Blendex by Milburn Flooring has worked alongside some of the most widely recognized owners, architects, and engineering firms contracted to write and design flooring specs for the most challenging projects.



FIRE DEPARTMENTS

Firehouse floors take some heat. Cracked and peeling floors from the abuse of heavy equipment and hot tires are the norm. With over 50 fire department flooring installations under our belt, Blendex by Milburn Flooring has become synonymous with firehouse flooring. Areas such as apparatus bays, kitchens, gear rooms, and bathrooms are just a few areas where we can help. Up to five times stronger than concrete, our non-skid surfaces provide a safe environment and resist deterioration and abrasion. Its low maintenance makes epoxy a clear choice so ask your representative for all our references on past firehouse projects and hear why chiefs, commissioners & architects prefer Blendex by Milburn Flooring for their fire department floors.

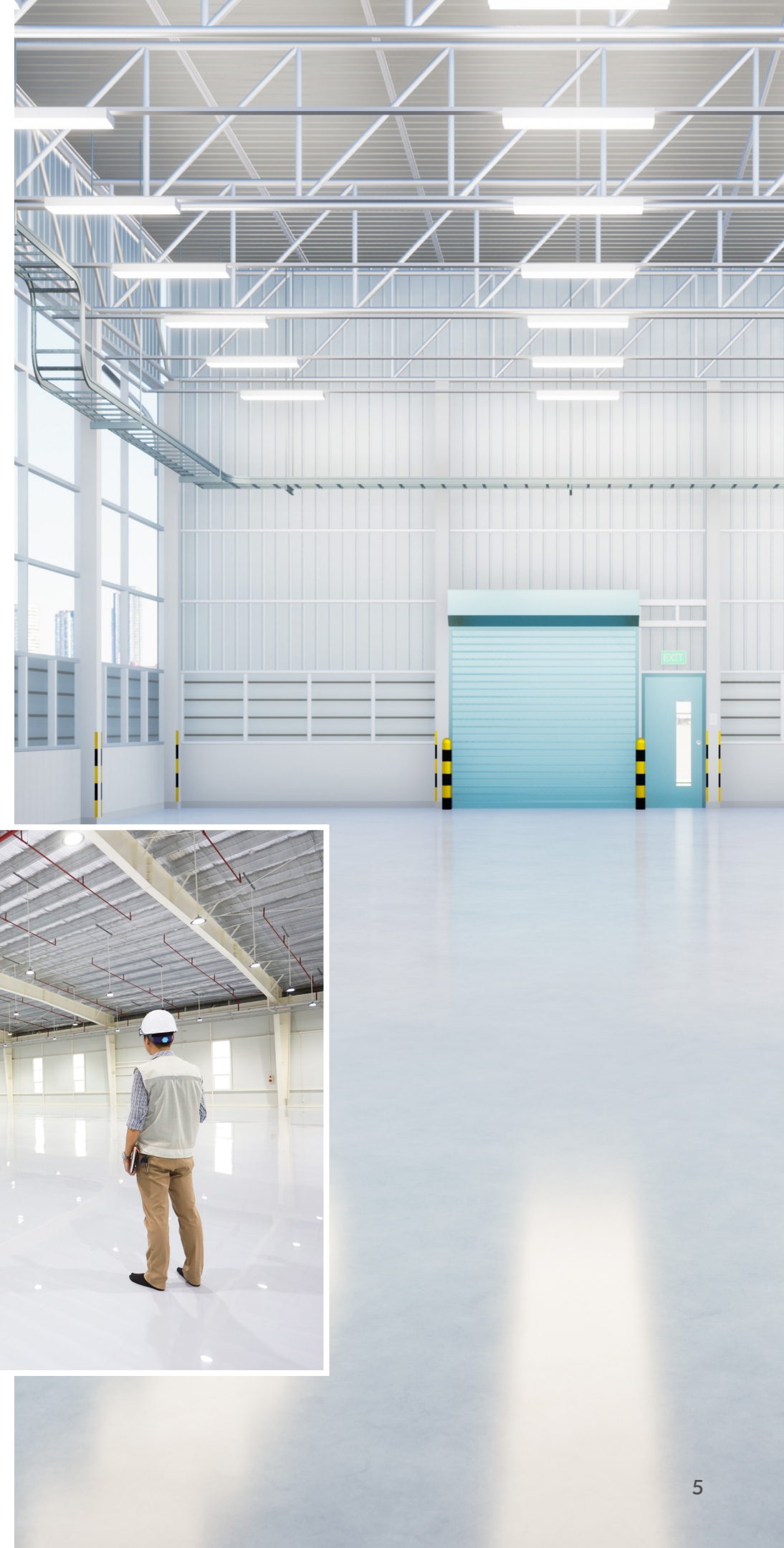


EDUCATION FACILITIES

Although school buildings get relief during the summer, they are among the busiest, high trafficked facilities from September through June. These buildings are perfect for the longevity, ease of maintenance, and slip resistance of epoxy flooring and wall systems. Locker rooms, classrooms, hallways, laboratories, kitchens, and cafeterias are ideal spaces for epoxy floors. From decorative to durable, we offer a specific application for all.

WAREHOUSES

Keeping dust down, protecting your concrete, and having a more aesthetically pleasing look on your warehouse floor can save you money down the road and keep employee morale high. Blendex by Milburn Flooring offers a range of durable & cost-effective warehouse epoxy floor applications. Increase the durability and UV resistance with these systems by adding an optional urethane finish with many colors and finishes to choose from.





HEALTHCARE FACILITIES

Sanitary floors start with a durable, seamless surface and resists pitting or gouging, which may lead to crevices that can harbor bacteria. Blendex by Milburn Flooring offers cost-effective resin systems delivering a stain-resistant solution that is easy to clean and keeps labs, hospitals, or in-patient centers looking good. The seamless design eliminates potential trip hazards and promotes a sanitary environment. Electrostatic dissipative (ESD) systems are available to protect sensitive electronic equipment.

GOVERNMENT FACILITIES

Blendex by Milburn Flooring offers hangar floor systems that not only protect concrete flooring from the ravages of aviation fuel and fluids, its highly cross-linked industrial floor finish is also resistant to staining from hot rubber tires. At the same time, slip-resistant options help keep workers safe. The exceptionally glossy light reflective concrete coating improves visibility and safety without additional lighting.





PROFLAKE SYSTEMS

Decorative Flake Broadcast Resurfacing Systems

BENEFITS

- 100% Solids Material - Low Odor
- Highly Moisture Tolerant ("MB" Primer)
- Chemical & Stain Resistant
- Excellent Durability & Hard-Wearing
- Seamless - Easy to Clean & Maintain
- Optional Microbe♦BLOK, Additive
- Integral Cove Base
- Colorfast Polymer Flakes
- Broad Spectrum of Color Flake Blends
- Varied Non-Slip Textures
- UV Stable - Gloss or Satin Finish

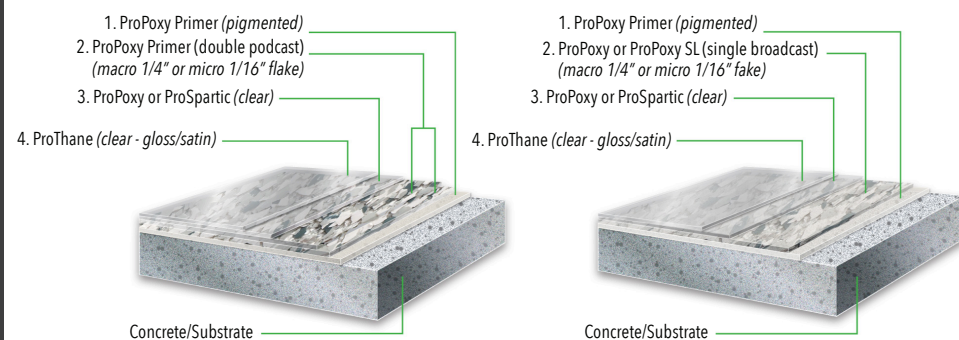
TYPICAL USES

- Retail & Grocery
- Classrooms & Cafeterias
- Hospitals
- Fire Department
- Apparatus Bays
- Pharmaceutical
- Laboratories
- Clean Rooms
- Restaurants
- Lobbies
- Restrooms
- Corridors

SYSTEM DESIGN

System range from approximately 1/16" - 3/16" in total thickness.

- 1. Primer/Sealer: ProPoxy (S-Standard or F-Fast), FlexPoxy** (elastomeric membrane), or **ProPoxy Moisture♦BLOK (MB)**, 100% solids epoxy primers to seal the substrate.
- 2. Base Coat: ProPoxy (S-Standard or F-Fast)** in clear, or **ProPoxy SL** ("self-level") 100% solids, pigmented epoxy is combined with specially blended polymer "flakes" (macro - 1/4" or micro - 1/16") using a single (PF-100) or double (PF-200) broadcast method. A second broadcast can be applied with clear **ProPoxy (S-Standard or F-Fast)** 100% solids epoxy for enhanced consistency and uniformity in the blended flake finish.
- 3. Topcoat:** Depending upon the required surface texture, a single or second topcoat can be applied using either clear **ProPoxy (S-Standard or F-Fast)** epoxy, or **ProSpartic (S-Standard or F-Fast)**, clear aliphatic, ultra-high solids polyaspartic for quicker recoat and/or return to service.
- 4. Finish Coat: ProThane (S-Standard, F-Fast, or HH-High Humidity)**, ultra-high solids, "high-performance" urethane topcoat in either gloss or satin finish.
 - **Color Blends:** 15 color blends* available in the "Standard" Series, with 6 color blends each in the "Mica" and "Stone" Series. Custom color blending is available in both sizes.
 - **ProWear additive** is available for enhanced abrasion and wear resistance in the **ProThane** finish coat.
 - **ProGrip additive** can be included for enhanced non-slip resistance.



ProFlake PF-100 and **200** combine 100% solids, clear epoxy with specially blended polymer flakes (macro-1/4" or micro-1/16") broadcasted into the resinous matrix to create a stylish yet durable seamless floor resurfacing system for both commercial and institutional settings. Both the single (**PF-100**) and double (**PF-200**) broadcast systems are hard-wearing and provide excellent chemical, stain, and abrasion resistance. Combine with **FlexPoxy**, an elastomeric epoxy as a high-build waterproofing membrane system for slab-on-deck applications. The **ProFlake** system is available with **Microbe♦BLOK**, an optional antimicrobial additive.



PROKRETE SL & SLB SYSTEMS

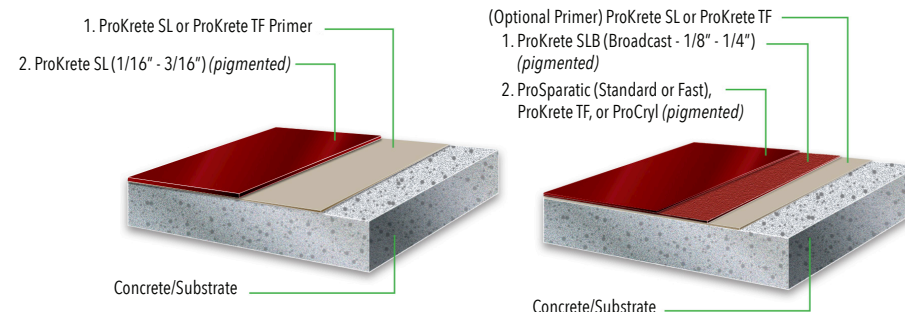
SYSTEM DESIGN

ProKrete SL system range from approximately 1/16" - 3/16" in total thickness.

- 1. Primer:** To prevent "pin holes" in the finish floor, the **ProKrete SL** or **ProKrete TF** products should be applied using a flat trowel or squeegee to yield 200 sq ft (+/-) per kit. (Accelerator may be used for "same day" overlay application).
 - 2. Slurry Coat: (1/16" - 3/16")** Refer to Technical Data Sheet for desired application thickness method of the **ProKrete SL** product.

ProKrete SLB system range from approximately 1/8" - 1/4" in total thickness.

Primer (Optional): To prevent outgassing in the finish floor, the **ProKrete SL** or **ProKrete TF** products may be applied using a flat trowel or squeegee to yield 200 sq ft (+/-) per kit. (Accelerator may be used for "same day" overlay application).
 - 1. Slurry Coat: (1/16" - 3/16")** Refer to Technical Data Sheet for desired application thickness method of the **ProKrete SL** product, broadcast with natural silica quartz or other suitable broadcast medium for desired texture.
 - 2. Top Coat: ProSpartic** (Standard or Fast) gloss or **ProKrete TF** (Thin Film) matte finish. **ProCryl HT, KT, or UVR**, 100% reactive methyl methacrylate (MMA) top coat can also be applied as a low gloss, hard-wearing, chemical & temperature (KT) resistant option for a more rapid return to service.
- **Universal Colorants:** 18 standard colors* universal for all ProREZ performance resins. Note: due to the natural cream base color of ProKrete SL, use Medium Grey for Light Grey, Slate Grey for Medium Grey, and Charcoal Grey for Slate or Dark Grey.



ProKrete SL and **SLB** are seamless, solid-colored cementitious urethane slurry & slurry broadcast resurfacing systems for industrial and commercial applications. **ProKrete SL** provides a durable and smooth, monolithic matte floor finish, resistant to thermal shock, point impact and moisture vapor transmission. **ProKrete SLB** incorporates a broadcast with natural silica quartz aggregate for increased slip resistance in environments subject to wetness, grease and oil exposures. The **SLB** system can be sealed with a number of chemical resistant top coat options. Both the **SL** and **SLB** systems can be applied for a quicker turn-around by accelerating the urethane slurry base coat.

BENEFITS

- Zero VOC Material - Low Odor
- Non-Tainting of Open Food Product
- Manufactured w/o Benzyl Butyl Phthalate
- Optional Microbe♦BLOK Additive
- Tenacious Bond Even Under Extreme Conditions
- Moisture Tolerant to 20 lbs/1,000 sq ft /24 hrs
- Can Be Applied Over 7 Day Old Concrete
- Self-Priming
- Chemical Resistant to Caustics, Organic & Inorganic Acids, Solvents & Alkalis
- Thermal Shock Resistance to 250°F
- Excellent Thermal Coefficient of Expansion (Hot/Cold Cycling) - Maintaining Bond Strength
- Superior Point Impact & Abrasion Resistance
- Field Option for Accelerated Cure

TYPICAL USES

- Commercial Kitchens
- Meat/Poultry and Dairy Processing
- Pharmaceutical Plants
- Beverage Processing Areas
- Exterior Applications
- Service Bays
- Bakeries



PROLUMINA SYSTEMS

Artfully Designed Iridescent Flooring System



PROQUARTZ SYSTEMS

Colored Quartz Broadcast Resurfacing System

BENEFITS

- Zero VOC Material - Low Odor
- Broad Spectrum of Reflective and Color Shift Pigments
- Custom Blending for "One-of-a-Kind" Designs
- Accelerated Cure Available for Quicker Return to Service
- Highly Moisture Tolerant
- Chemical & Stain Resistant
- Excellent Durability & Hard-Wearing
- Seamless - Easy to Clean & Maintain
- Optional Microbe•BLOK Additive
- Adhesion Promoter - Tenacious Bonding
- UV Stable - Gloss or Satin Finish

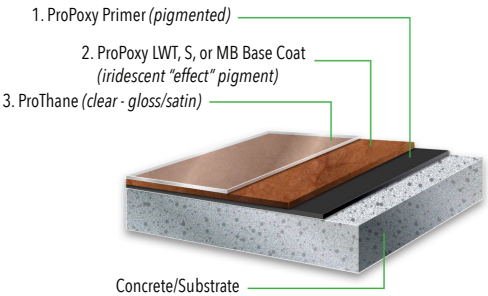
TYPICAL USES

- Showrooms
- Waiting Rooms
- Retail & Boutiques
- Restaurants
- Bars & Night Clubs
- Lobbies
- Museums & Galleries

SYSTEM DESIGN

System range from approximately 40 - 50 mils in total thickness.

- 1. Primer/Sealer: ProPoxy (S-Standard or F-Fast), or Moisture•BLOK (MB)**, 100% solids epoxy is applied to seal the substrate. **FlexPoxy**, a 100% solids, high-build (epoxy) \ elastomeric hybrid could be used over a tile or wood substrate. Primer/sealer can be tinted black, white, or lower concentration of the same light-reactive pigment used in the base coat.
- 2. Base Coat: ProPoxy LWT, S, or MB** is tinted with selected light-reactive pigment(s) and applied at a minimum thickness of 30 mils. The **ProPoxy MB-F** system is uniquely sensitive to the "special effects" created with either a simple dispersing agent or other pigment-manipulated application techniques.
- 3. Finish Coat: ProThane (S-Standard, F-Fast, or HH-High Humidity)**, clear aliphatic, ultra-high solids, "high-performance" urethane topcoat in either gloss or satin finish.
 - **Colorants:** 15 standard iridescent colors* are available. Custom color blending is available.
 - **ProWear additive** is available for enhanced abrasion and wear resistance in the ProThane finish coat.
 - **ProGrip additive** can be included for enhanced non-slip resistance.

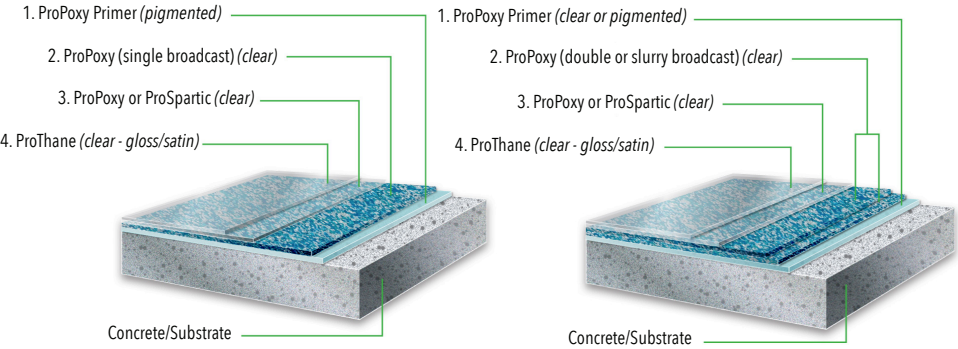


ProLumina (PL-100) combines a uniquely formulated, clear, 100% solids epoxy hybrid resin with special light-reactive pigments of incredible depth & color brilliance to create a one-of-a-kind, designer floor coating that's both functional and beautiful under foot. This highly stylish and chromatically reflective flooring system is also seamless, hard-wearing, and provides excellent built-in moisture vapor protection, as well as excellent chemical, stain, and abrasion resistance.

SYSTEM DESIGN

System range from approximately 1/16" - 3/16" in total thickness.

- 1. Primer/Sealer: ProPoxy (S-Standard or F-Fast), FlexPoxy** (elastomeric membrane), or **ProPoxy Moisture•BLOK (MB)**, 100% solids epoxy primers to seal the substrate.
- 2. Base Coat: ProPoxy (S-Standard or F-Fast)**, a clear 100% solids epoxy resin is broadcasted with decorative quartz aggregate (40 mesh - "fine" or 25 mesh - "coarse") using either a single, double, or slurry broadcast method to yield a 1/16" - 3/16" seamless resurfacing system.
- 3. Topcoat:** Depending upon the required surface texture, a single or second topcoat can be applied using either clear **ProPoxy (S-Standard or F-Fast)**, 100% solids epoxy, or **ProSpartic (S-Standard or F-Fast)**, clear aliphatic, high-solids, polyaspartic for quicker recoat and/or return to service.
- 4. Finish Coat: ProThane (S-Standard, F-Fast, or HH-High Humidity)**, ultra-high solids, "high-performance" urethane topcoat in either gloss or satin finish.
 - **Color Blends:** 15 standard blends* are available in either 40 or 25 mesh aggregates. Custom color blending is available in both sizes.
 - **ProGrip additive** can be included for enhanced non-slip resistance.



ProQuartz PQ-100 and 200 combine 100% solids, clear epoxy with specially blended colored quartz aggregates (40 mesh - "fine" or 25 mesh - "coarse") broadcasted into the resinous matrix to create a highly durable and decorative seamless floor resurfacing system for commercial, industrial, and institutional settings. The single (**PQ-100** -1/16"), double & slurry (**PQ-200** -1/8"-3/16") broadcast systems are hard-wearing and provide excellent chemical, stain, and abrasion resistance. Combine with **FlexPoxy**, an elastomeric hybrid as a high-build waterproofing membrane system for slab-on-deck applications. The **ProQuartz** system is available with **Microbe•BLOK**, an optional antimicrobial additive.

BENEFITS

- 100% Solids Material - Low Odor
- Highly Moisture Tolerant ("MB" Primer)
- Chemical & Stain Resistant
- High Build & Decorative
- Good Impact Resistance
- Excellent Durability & Hard-Wearing
- Seamless - Easy to Clean & Maintain
- Optional Microbe•BLOK Additive
- Integral Cove Base
- Colorfast Ceramic Coated Quartz
- Broad Spectrum of Color Quartz Blends
- Custom Blending
- Varied Non-Slip Textures
- UV Stable - Gloss or Satin Finish

TYPICAL USES

- Retail & Grocery
- Classrooms & Cafeterias
- Hospitals
- Pharmaceutical
- Laboratories
- Locker & Restrooms
- Restaurants
- Stadiums
- Detention Facilities
- Lobbies
- Corridors
- Animal Care



ProShield SC System

Standard Coating System

BENEFITS

- 100% Solids Material - Low Odor
- Moisture Tolerant ("MB" Primer)
- Chemical & Stain Resistant
- Excellent Durability
- Seamless - Easy Maintenance
- Universal Colorants
- UV Stable - Gloss or Satin Finish
- Varied Non-Slip Textures

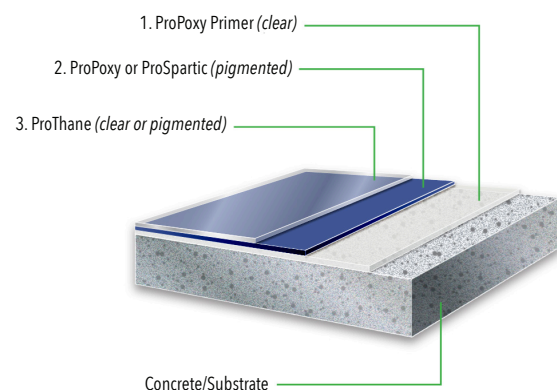
TYPICAL USES

- Light Manufacturing & Assembly
- Aircraft Hangars
- Warehouses
- Laundromat
- Laboratories
- Utility Rooms
- Clean Rooms

SYSTEM DESIGN

System range from approximately 20 - 40 mils in total thickness.

- 1. Primer/Sealer: ProPoxy (S-Standard or F-Fast) or ProPoxy MoistureuBLOK (MB)**, 100% solids epoxy hybrid primers to seal the substrate.
- 2. Base Coat: ProPoxy (S-Standard or F-Fast)** 100% solids epoxy or **ProSpartic (S-Standard or F-Fast)**, a high solids, polyaspartic for quicker recoat and/or return to service.
 - **Universal Colorants:** 18 standard colors* universal for all **ProREZ** performance resins. Custom colors available.
 - **ProWear additive** is available for enhanced abrasion and wear resistance in the **ProThane** finish coat.
 - **ProGrip additive** can be included for enhanced non-slip resistance.
- 3. Top Coat: ProThane (S-Standard, F-Fast, or HH-High Humidity)**, ultra-high solids, "high-performance" urethane topcoat in either gloss or satin finish.
 - The **ProShield SC-100 system** can be smooth or semi-smooth with **ProGrip** added into the ProThane finish coat. Standard non-slip texture can be provided with 54 or 36-grit aluminum oxide added into the epoxy or urethane base coat.



ProShield SC-100 is a 100% solids, pigmented, high performance, chemical resistant industrial and commercial coating. It's practical & economical while offering good versatility & durability in seamless floor protection. The **SC-100's** hard-wearing design make it a solid choice for low-impact and moderate traffic areas where chemical and abrasion resistance are significant concerns.



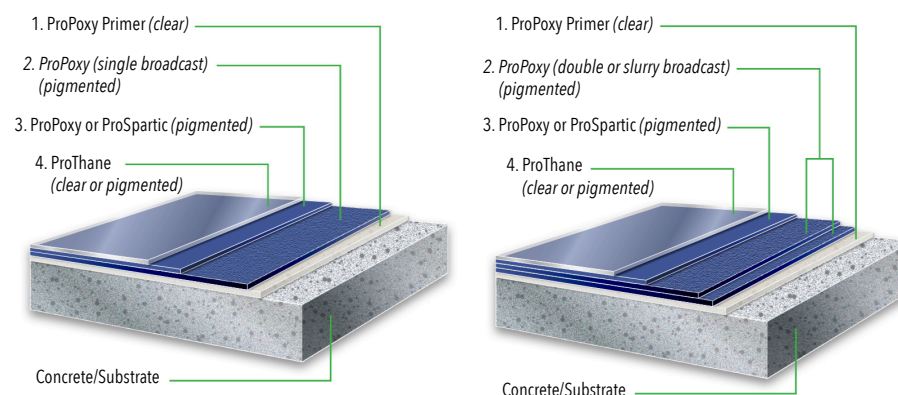
ProShield SF System

Natural Quartz Broadcast Resurfacing System

SYSTEM DESIGN

System range from approximately 1/16" - 3/16" in total thickness.

- 1. Primer/Sealer: ProPoxy (S-Standard or F-Fast), FlexPoxy** (elastomeric membrane), or **ProPoxy Moisture•BLOK (MB)**, 100% solids epoxy primers to seal the substrate.
- 2. Base Coat: ProPoxy**, a 100% solids epoxy resin is broadcasted with finely graded natural silica quartz aggregate (40 mesh - "fine" or 25 mesh - "course") using either a single, double, or slurry broadcast method to yield a 1/16" or 1/8"-3/16" seamless resurfacing system.
- 3. Topcoat:** Depending upon the required surface texture, a single or second topcoat can be applied using either **ProPoxy (S-Standard or F-Fast)**, 100% solids epoxy, or **ProSpartic (S-Standard or F-Fast)**, high solids, polyaspartic for quicker recoat and/or return to service.
 - **Universal Colorants:** 18 standard colors* universal for all **ProREZ** performance resins. Custom colors available.
 - **ProWear additive** is available for enhanced abrasion and wear resistance in the **ProThane** finish coat.
 - **ProGrip additive** can be included for enhanced non-slip resistance.
- 4. Finish Coat: ProThane (S-Standard, F-Fast, or HH-High Humidity)**, ultra-high solids, "high-performance" urethane topcoat in either gloss or satin finish.



ProShield SF-100B and 200B combine 100% solids, pigmented epoxy with natural quartz sand aggregate (40 mesh - "fine" or 25 mesh - "course") broadcasted into the resinous matrix to create a highly durable seamless floor resurfacing system for both industrial and commercial settings. Both the single (100B: 1/16") and double (200B: 1/8" - 3/16") broadcast systems provide excellent resistance to chemical spills and moderate to heavy traffic. Combine with FlexPoxy, an elastomeric hybrid as a high-build waterproofing membrane sealer for mechanical room (MR) applications. **ProShield SF** is a workhorse system meeting or exceeding federal standards for safety and performance.

BENEFITS

- 100% Solids Material - Low Odor
- Highly Moisture Tolerant ("MB" Primer)
- Chemical & Stain Resistant
- Good Impact Resistance
- Excellent Durability
- Seamless - Easy to Clean & Maintain
- Optional MicrobeuBLOK Additive
- Integral Cove Base
- Universal Colorants
- UV Stable - Gloss or Satin Finish
- Varied Non-Slip Textures

TYPICAL USES

- Manufacturing
- Apparatus & Service Bays
- Traffic Aisles
- Loading Docks
- Storage Areas
- Mechanical Rooms
- Animal Care



PROSHIELD SL SYSTEM

High Build Resurfacing Systems

BENEFITS

- 100% Solids Material - Low Odor
- Highly Moisture Tolerant ("MB")
- Chemical & Stain Resistant
- Good Impact Resistance
- Restores Damaged, Old Concrete
- Excellent Durability & Hard Wearing
- Seamless - Easy to Clean & Maintain
- Universal Colorants
- UV Stable - Gloss or Satin Finish
- Non-Slip Resistance
- Adhesion Promoter

TYPICAL USES

- Manufacturing
- Aircraft Hangars
- Loading Docks
- Printing
- Pharmaceutical
- Laboratories
- Clean Rooms
- Traffic Aisles
- Corridors
- Garages

SYSTEM DESIGN

System range from approximately 60 - 100 mils in total thickness.

- 1. Primer/Sealer:** ProPoxy (S-Standard or F-Fast) or ProPoxy MoistureuBLOK (MB), 100% solids epoxy hybrid primers to seal the substrate.
- 2. Base Coat:** ProPoxy SL, a 100% solids high build epoxy resin with 20 lbs of SL filler (2 gal bucket) to yield a 60 or 100 mil resurfacing system.
- 3. Top Coat:** ProThane (S-Standard, F-Fast, or HH-High Humidity), ultra-high solids, "high-performance" urethane topcoat in either gloss or satin finish.
 - **Universal Colorants:** 18 standard colors* Custom colors available.
 - **ProWear** additive is available for enhanced abrasion and wear resistance in the ProThane finish coat.
 - **ProGrip** additive can be included for enhanced non-slip resistance.
 - **The ProShield SL-60** and SL-100 systems can be smooth or semi-smooth with ProGrip added into the ProThane finish coat.

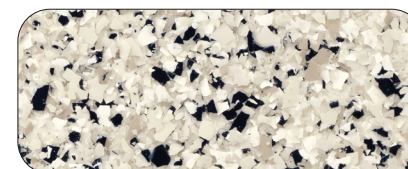
ProShield SL-60 and SL-100 are 100% solids, pigmented, high build coating systems for industrial and commercial settings. With the addition of ProFill SL, finely graded natural quartz aggregate and fillers to the ProPoxy SL resin, the SL-60 and SL-100 become excellent self-leveling (S/L) resurfacers. These high build epoxy options offer excellent versatility & durability in seamless floor protection. Their resin-rich designs make them a solid choice for higher impact and moderate to high traffic areas.

Color Charts

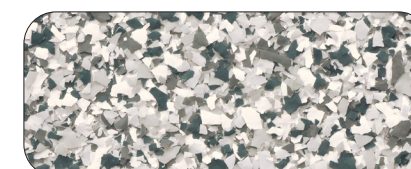
Colors and "special effects" shown with these light-reactive pigments are approximate values. Custom color blending is available. Due to its highly unique and one-of-a-kind nature, the overall appearance is subject to variations with light, floor substrate, and finishing techniques. The blended color samples shown are only close approximations of the actual flooring system. For a more accurate value when specifying the actual system and finish texture, request a physical sample to verify the blend choice before installation. Contact a Blendex by Milburn Flooring representative for more information.

ProFlake

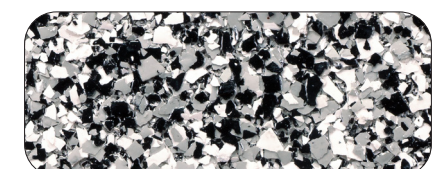
"Standard Series" Macro - 1/4"



PF - 612 Swan



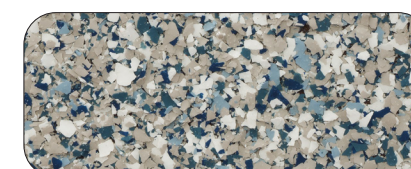
PF - 427 Stonehenge



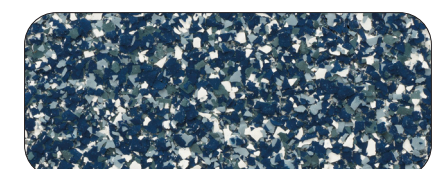
PF - 411 Domino



PF - 807 Tidal Wave



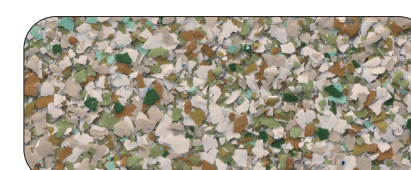
PF - 708 Stonewash



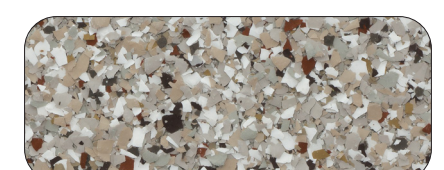
PF - 0416 Regatta



PF - 0418 Chai



PF - 710 Olivine



PF - 716 Creekbed



PF - 1001 Moth



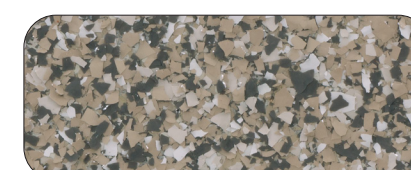
PF - 803 Seacrest



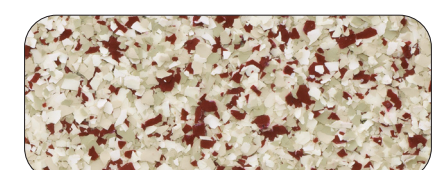
PF - 808 Clover



PF - 1003 Wren



PF - 706 Madras



PF - 604 Fireside

PROLUMINA



PL - 1110 Overcast



PL - 1020 Dolphin



PL - 1125 Bamboo



PL - 1165 Cannon



PL - 1250 Sangria



PL - 1105 Guava



PL - 1640 Azure



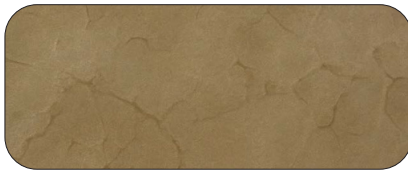
PL - 1530 - Seaweed



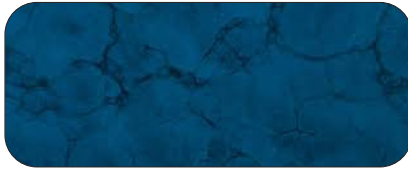
PL - 1340 Ginger



PL - 1320 Mango



PL - 1115 Sandbar



PL - 1650 Ocean



PL - 1440 Sunset



PL - 1150 Shipwreck



PL - 1330 Coral

PROQUARTZ 25



PQ25 - 1003 Solstice



PQ25 - 1012 Acorn



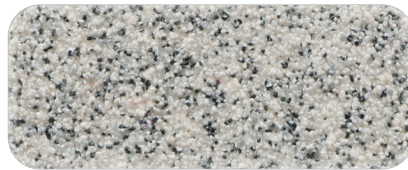
PQ25 - 1018 New Moon



PQ25 - 1019 Marina



PQ25 - 1023 Cinnamon



PQ25 - 1007 Dalmation



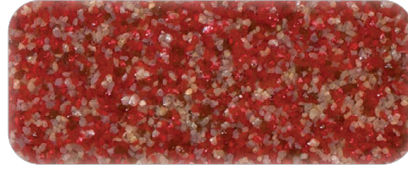
PQ25 - 1014 Davenport



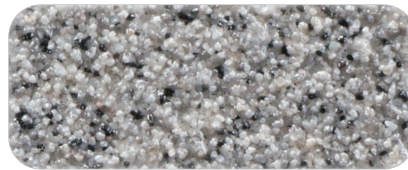
PQ25 - 1020 Clearwater



PQ25 - 1017 Aquamarine



PQ25 - 1025 Ruby



PQ25 - 1008 Eclipse



PQ25 - 5135 Brownstone



PQ25 - 5133 Wedgewood



PQ25 - 1022 Avocado



PQ25 - 5131 Bordeaux

PROQUARTZ 40



PQ40 - 1003 Solstice



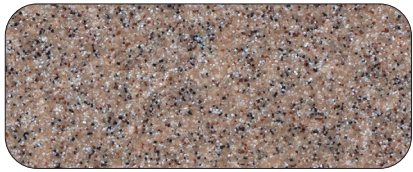
PQ40 - 1007 Dalmation



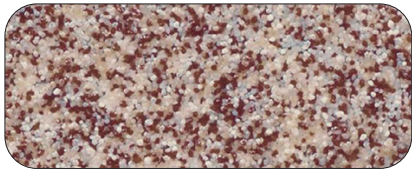
PQ40 - 1008 Eclipse



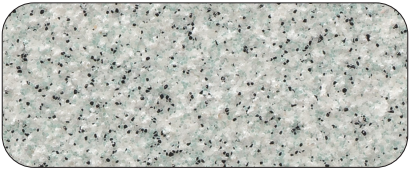
PQ40 - 1012 Acorn



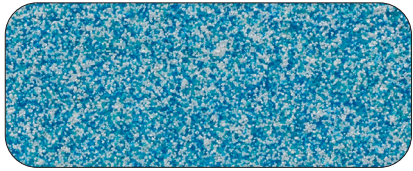
PQ40 - 1014 Davenport



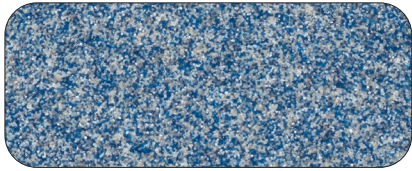
PQ40 - 5134 Brownstone



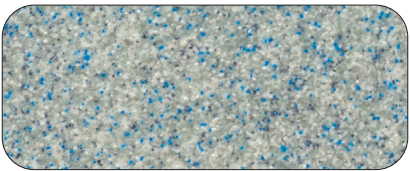
PQ40 - 1018 New Moon



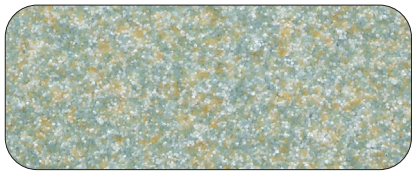
PQ40 - 1020 Clearwater



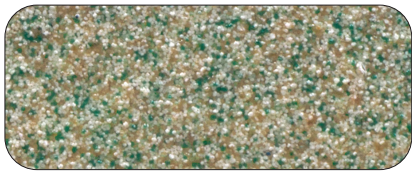
PQ40 - 5132 Wedgewood



PQ40 - 1019 Marina



PQ40 - 1017 Aquamarine



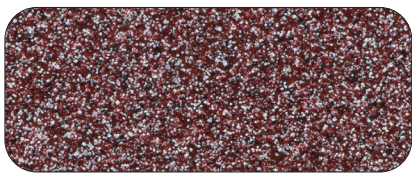
PQ40 - 1022 Avocado



PQ40 - 1023 Cinnamon



PQ40 - 1025 Ruby

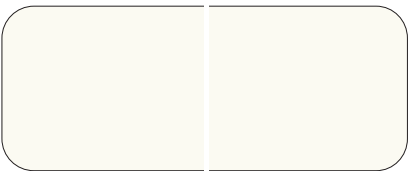


PQ40 - 5131 Bordeaux

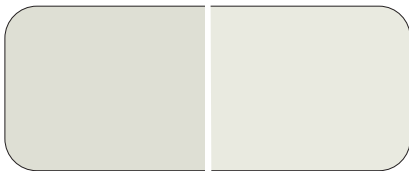
UNIVERSAL COLORANTS

Left side of color swatch = **Epoxy**

Right side of color swatch = **Polyaspartic/Urethane**



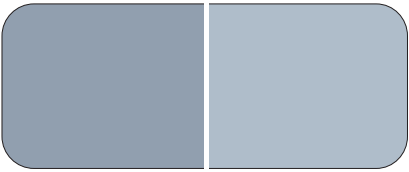
White - UC 6107



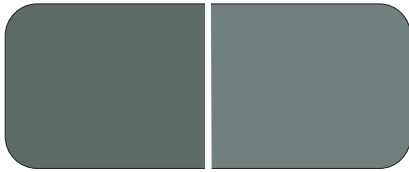
Light Gray - UC 6203



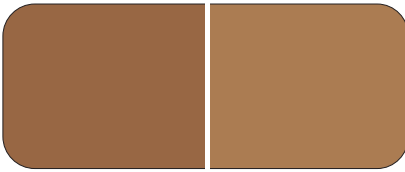
Charcoal Gray - UC 6207



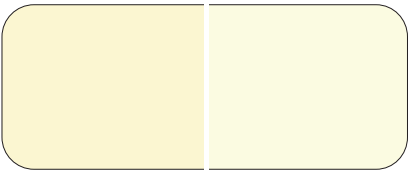
Slate Blue - UC 6807



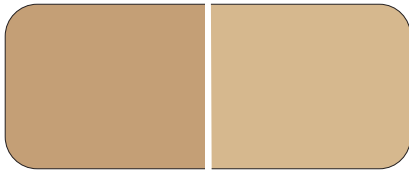
Slate Gray - UC 6217



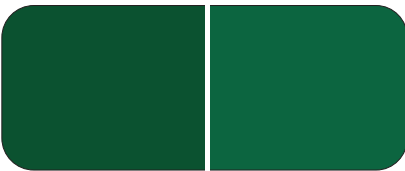
Mocha - UC 6705



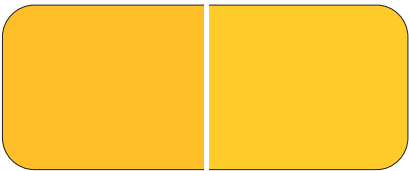
Ivory - UC 6102



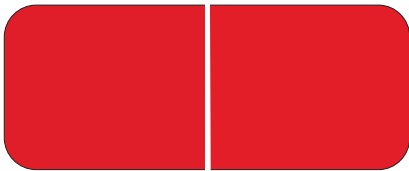
Sand - UC 6702



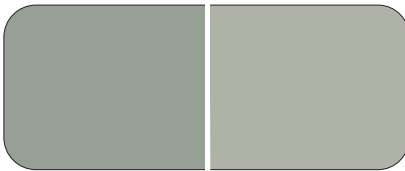
Green - UC 6602



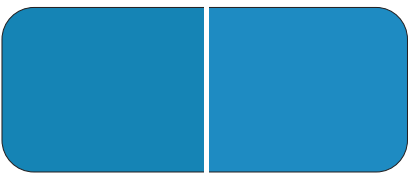
Traffic Yellow - UC 6301



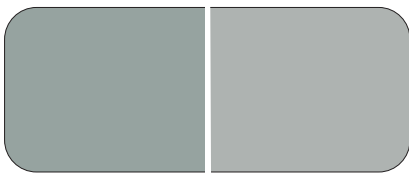
Traffic Red - UC 6501



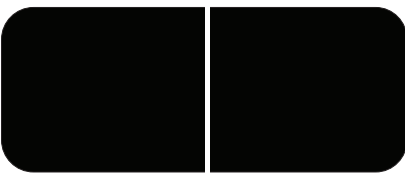
Concrete Gray - UC 6205



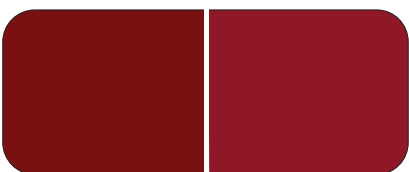
Arctic Blue - UC 6810



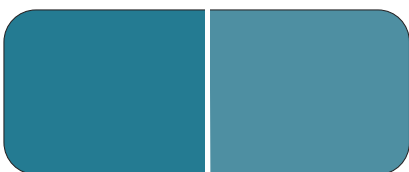
Medium Gray - UC 6206



Black - UC 6900M



Tile Red - UC 6502



Smoke Blue - UC 6809



Oxford Blue - UC 6801



CONTACT



631.842.1600



milburnflooring.com



20 35th Street,
Copiague NY 11726

0924

BLENDEX
BY MILBURN FLOORING **SINCE 1959**